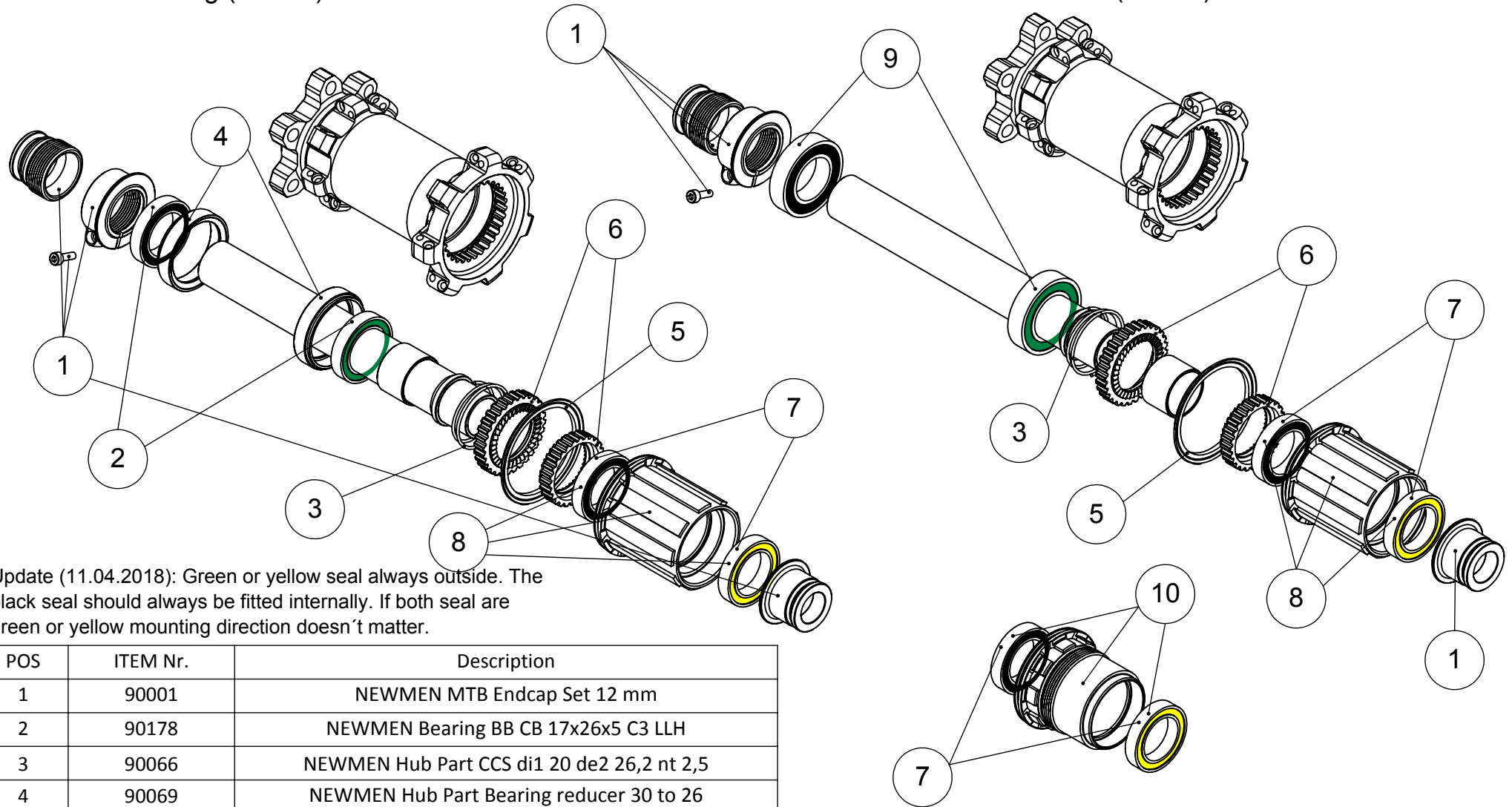


assembling with bearing reducer (POS 4) +
17x26x5 bearing (POS 2)

assembling with 17x30x7 bearing
(POS 9)



Update (11.04.2018): Green or yellow seal always outside. The black seal should always be fitted internally. If both seal are green or yellow mounting direction doesn't matter.

POS	ITEM Nr.	Description
1	90001	NEWMEN MTB Endcap Set 12 mm
2	90178	NEWMEN Bearing BB CB 17x26x5 C3 LLH
3	90066	NEWMEN Hub Part CCS di1 20 de2 26,2 nt 2,5
4	90069	NEWMEN Hub Part Bearing reducer 30 to 26
5	90316	NEWMEN Seal NBR 34,5
6	90006	NEWMEN Ratchet Set 36T incl. Spring
7	90178	NEWMEN Bearing BB CB 17x26x5 C3 LLH
8	90009	NEWMEN Freewheel MTB Shimano incl. bearing
9	90018	NEWMEN Bearing BB CB 17x30x7 C3 LLH
10	90008	NEWMEN Freewheel MTB Sram XD incl. bearing

NEWMEN

MG-Components GmbH & Co. KG
Am Mühlbach 5c
87487 Wiggensbach
Germany

Ersatzteile / Spare Parts :
NEWMEN MTB Rear 12x142 Straight Pull 6 Bolt 28h
NEWMEN MTB Rear 12x148 Straight Pull 6 Bolt 28h

Datum / Date :31.01.2017